

QUANTOFIX® Cobalt

en

Pack content:

1 aluminum container with 100 test strips

Measuring range:

10–1000 mg/L Co^{2+}

Color gradation:

0 · 10 · 25 · 50 · 100 · 250 · 500 · 1000 mg/L Co^{2+}

General indications:

Remove only as many test strips as are required. Close the container immediately after removing a strip. Do not touch the test field.

Instructions for use:

1. Dip the test strip into the sample (pH 2–7) for 1 s.
2. Shake off excess liquid.
3. Wait 20 s.
4. Compare test field with the color scale.

The test field turns green-blue in presence of cobalt(II) ions.

Interferences:

If the reaction color does not appear on the color scale, larger quantities of foreign ions interfere.

Reaction color brown (copper (II)): the interference is eliminated by addition of a small amount of crystalline sodium thiosulfate to 5–10 mL of the test solution. Reaction color grey (mercury (I)): the interference is eliminated by addition of a small amount of crystalline sodium chloride to 5–10 mL of the test solution.

Highly acid solutions (pH < 2) must be buffered to a pH of 2–7 with crystalline sodium acetate. Concentrated cobalt (II) ions must be diluted so that the cobalt (II) content comes within the limits of the color scale. The dilution factor must be taken into account when calculating the cobalt (II) content.

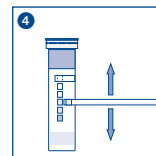
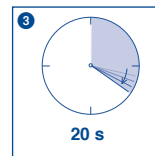
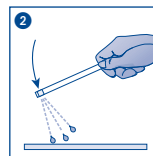
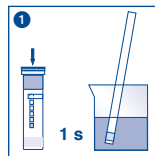
Disposal:










Used test strips can be placed in the normal household waste.

Storage:

Avoid exposing the strips to sunlight and moisture. Keep container cool and dry (storage temperature not above +30 °C).

If correctly stored, the test strips may be used until the use-by-date printed on the packaging.



 Artikelnummer / Item number / Référence produit / Referencia / Artikelnummer / Numero di catalogo / Numer artykułu	 Chargencode / Batch identification / Numéro de lot / Código de lote / Productienummer / Codice del lotto / Numer partii
 Achtung / Warning! / Attention! / ¡Atención! / Let op! / Attenzione! / Uwaga!	 Verwendbar bis / Use by / À utiliser avant / Fecha de caducidad / Te gebruiken tot / Utilizzare entro (anno / mese) / Przydatność do użycia
 Temperaturbegrenzung / Permitted storage temperature range / Limites de température / Limites de temperatura / Temperaturbegrenzung / Limite de temperatura / Ograniczenie temperatury	 Trocken aufbewahren / Store in a dry place / Conserver au sec / Mantener seco / Op een droge plaats bewaren / Mantener asciutto / Przechowywać w suchym miejscu
 Gebrauchsanweisung beachten / Please read instructions for use! / Respecter les instructions d'utilisation / Obsérvese las instrucciones de uso. / Lees de bijsluiter / Consultare le istruzioni per l'uso / Przestrzegać instrukcję użycia	 Packung geschlossen halten / Keep container closed / Refermer la boîte / Mantenga el envase cerrado / Verpakking gesloten houden / Conservare la confezione chiusa / Przechowywać pojemnik szczelnie zamknięty
 Ausreichend für <n> Prüfungen / Contains sufficient for <n> tests / Contenu suffisant pour <n> tests / Contenido suficiente para <n> tests / Voldoende voor <n> tests / Contenuto sufficiente per <n> test / Wystarczająco dla kontroli <n>	